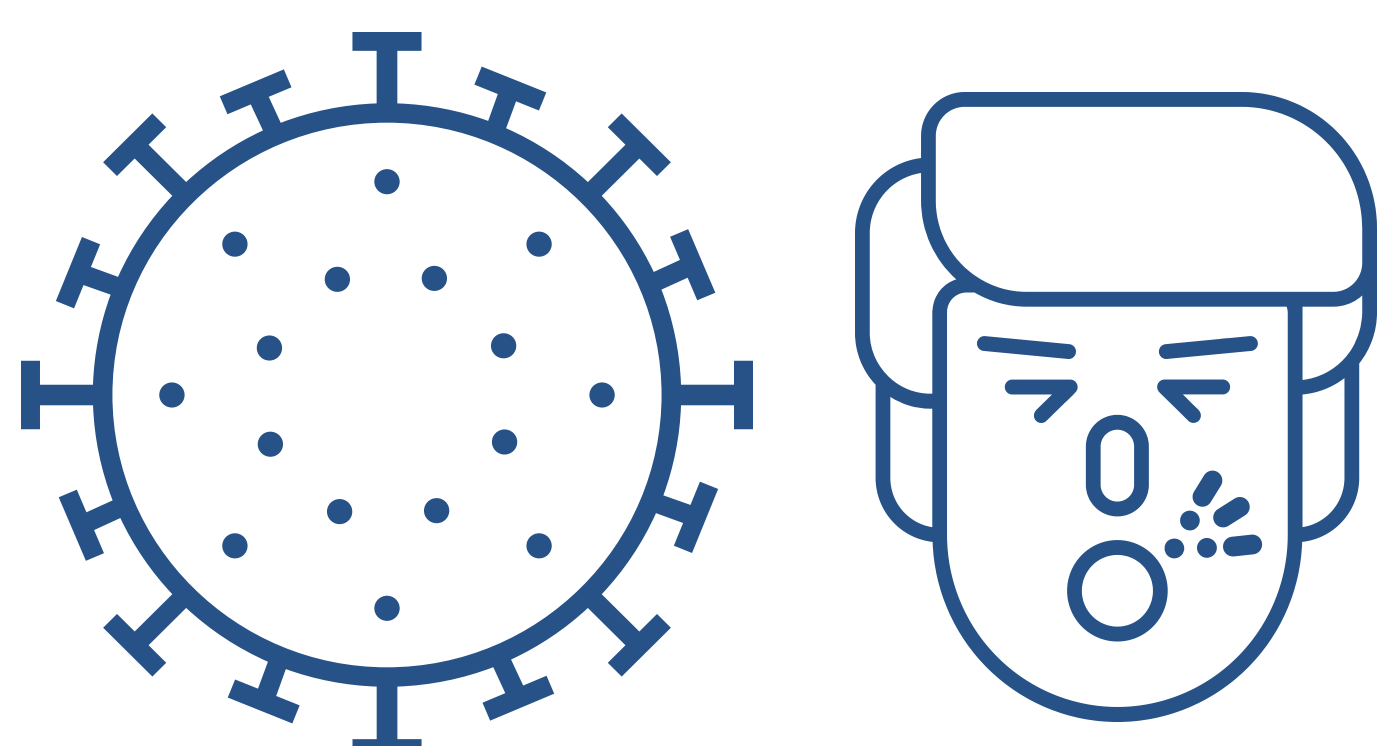
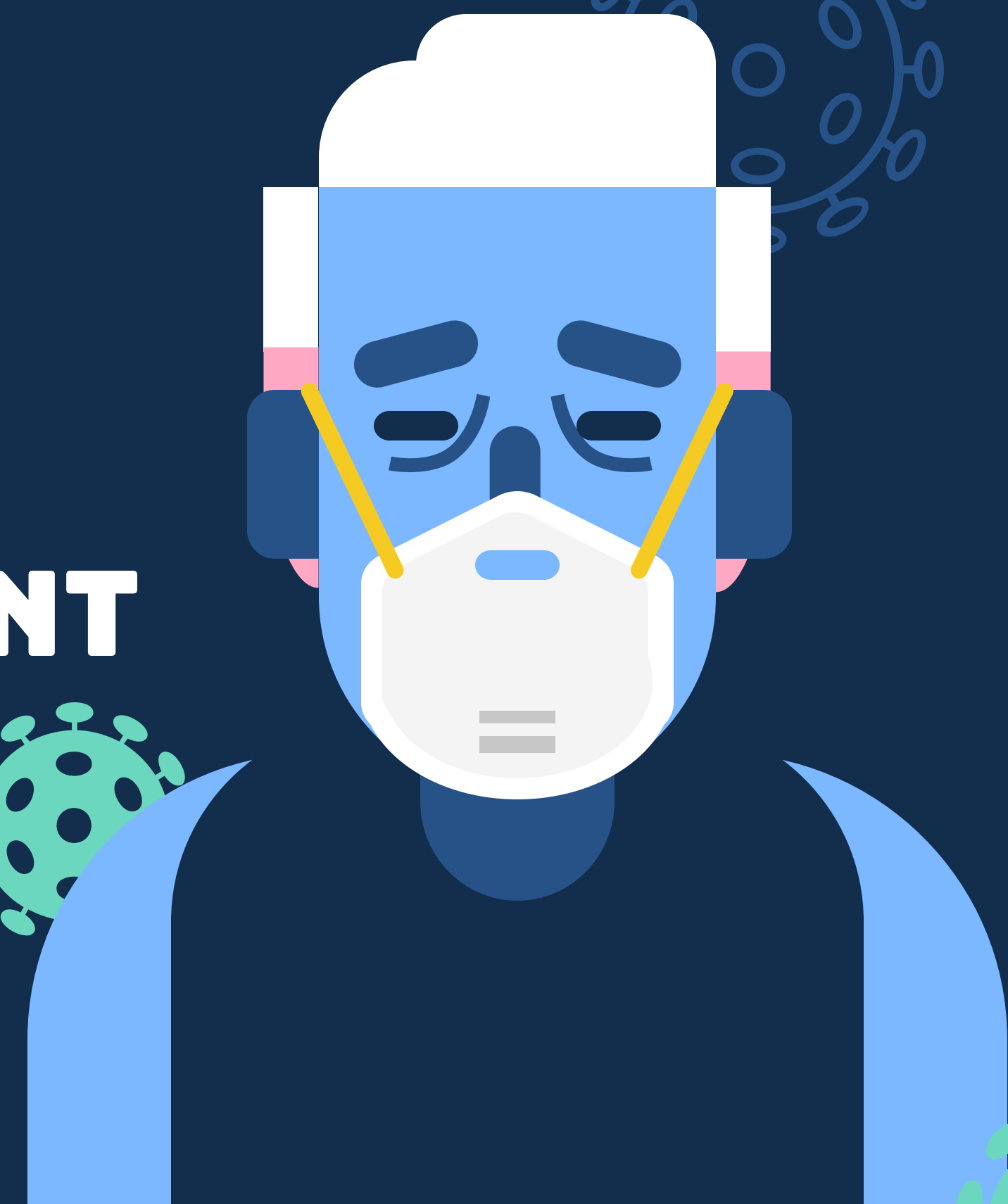




SPECIALIST PRACTICE TREATMENT DURING THE COVID-19 CRISIS: PATIENT TRIAGE



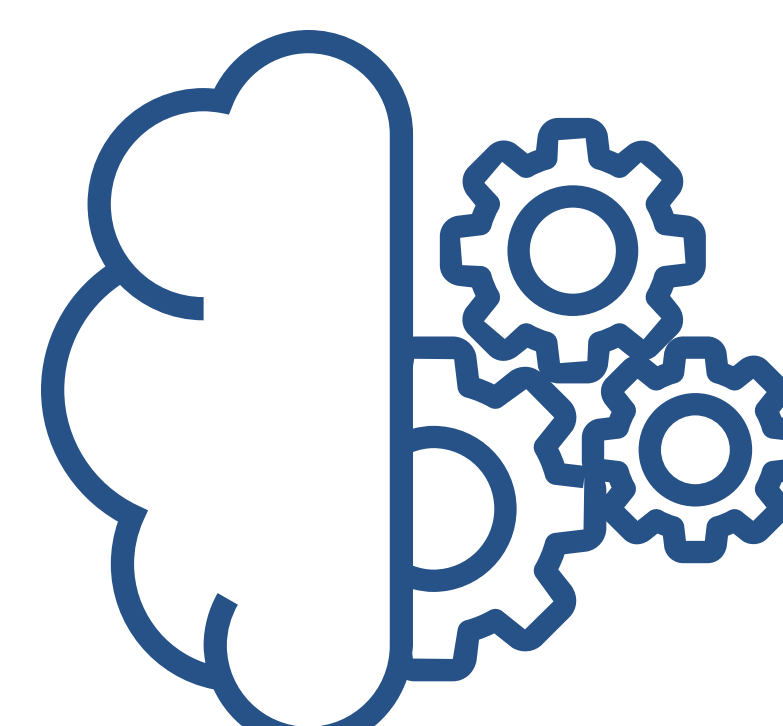
Covid-19

As the crisis starts to reduce and with government reviewing the lockdown restriction.



Norfolk Dental Specialists

We have been developing strategies and protocols on how to manage our patients.



Protocols

These are based on current international & national guidelines to ensure the safety of our patients and staff.



Phone Triage

The practice will phone patients prior to arranging an appointment.



Patient Risk Profile

During the call, questions will be asked to determine their level of risk.



Organised Treatment

Based on the patient's risk profile, we will arrange a suitable appointment.

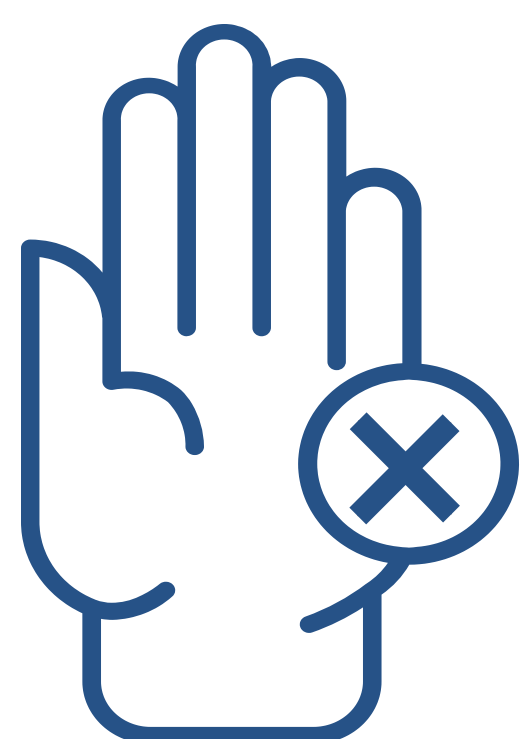


SPECIALIST PRACTICE TREATMENT DURING THE COVID-19 CRISIS: CLINICAL SETTING



Temperature Check

Once the patient attends the practice our team will carry out a temperature registration.



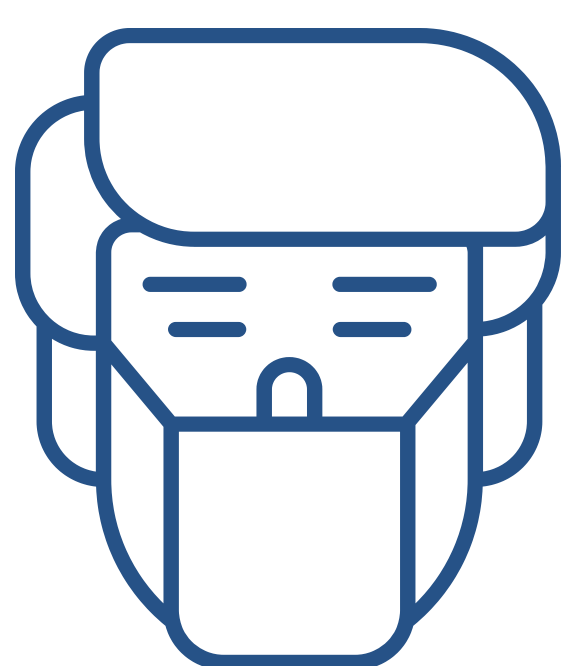
Hand Hygiene

The patient will be asked to wash their hands prior to rubbing their hands with alcohol gel.



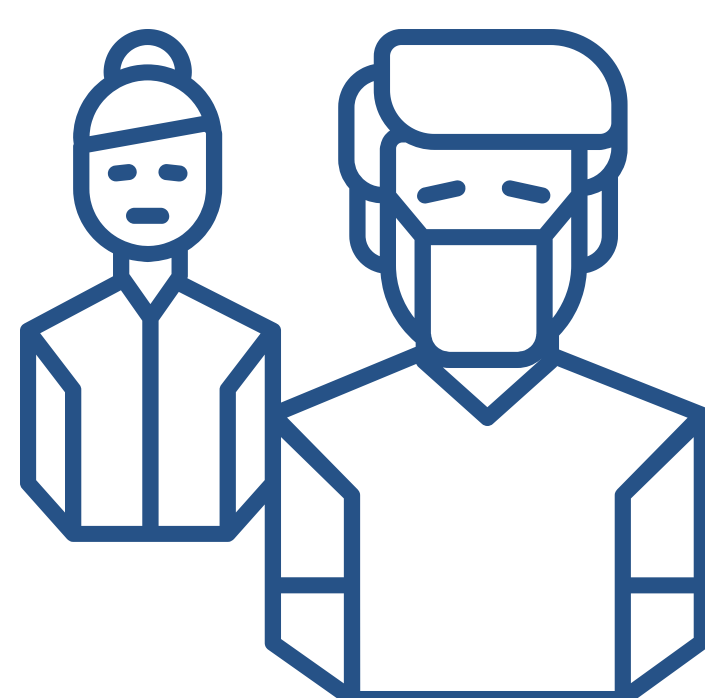
Repeat Triage

A member of the team will repeat the triage.



Mask

Prior to taking a seat in our lounge the patient will be provided with a surgical mask. In the lounge, we will ensure patients are 2 meters apart.



Social Distance

The number of staff working will be reduced as the practice will be running only two surgeries.

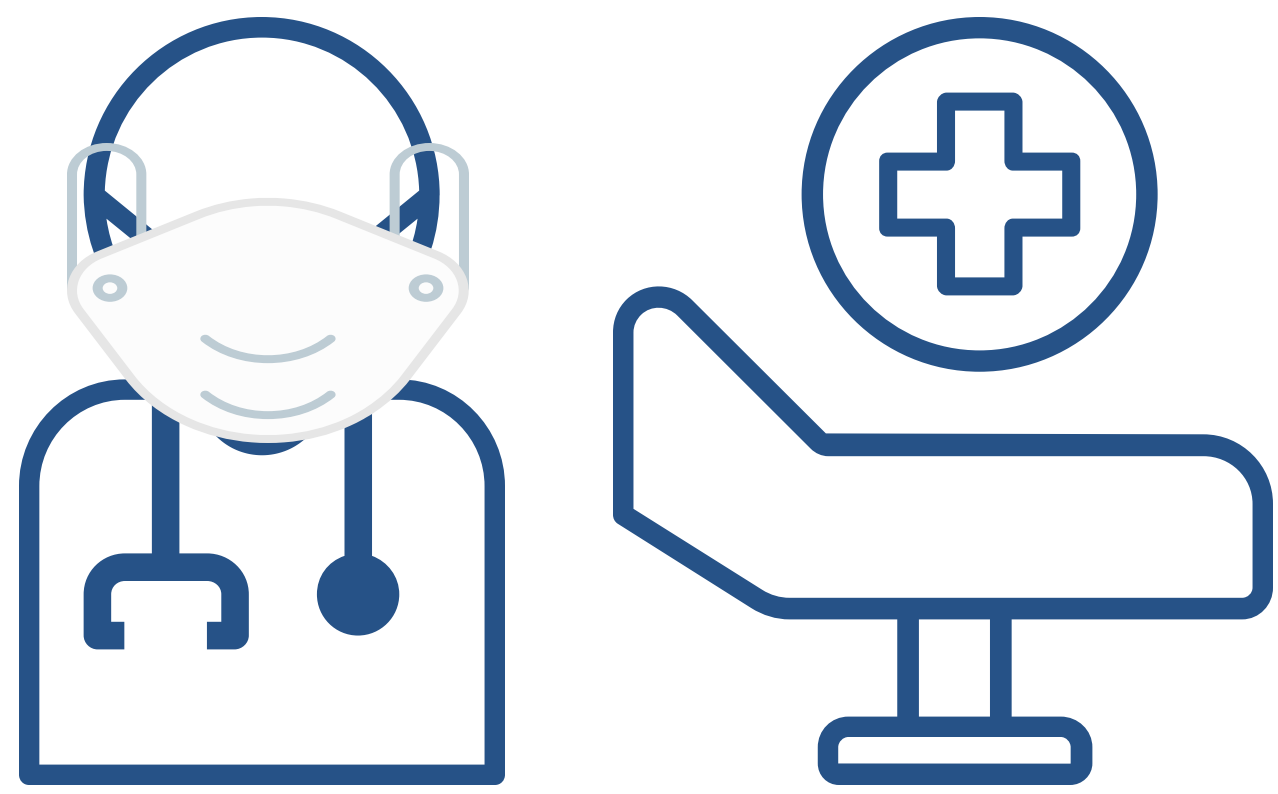
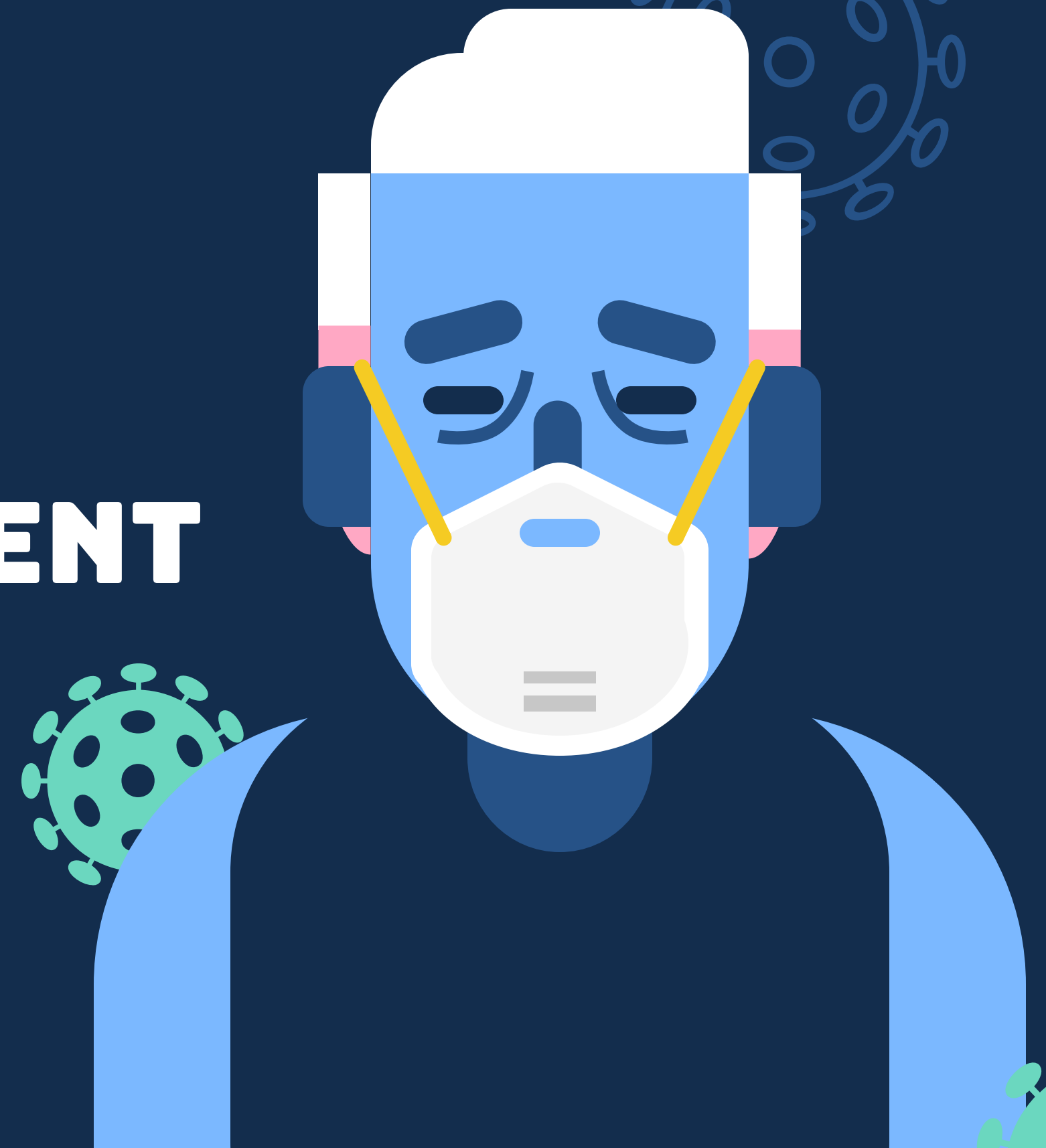


Personal Items

Patients belongings, should not be brought into the surgery.

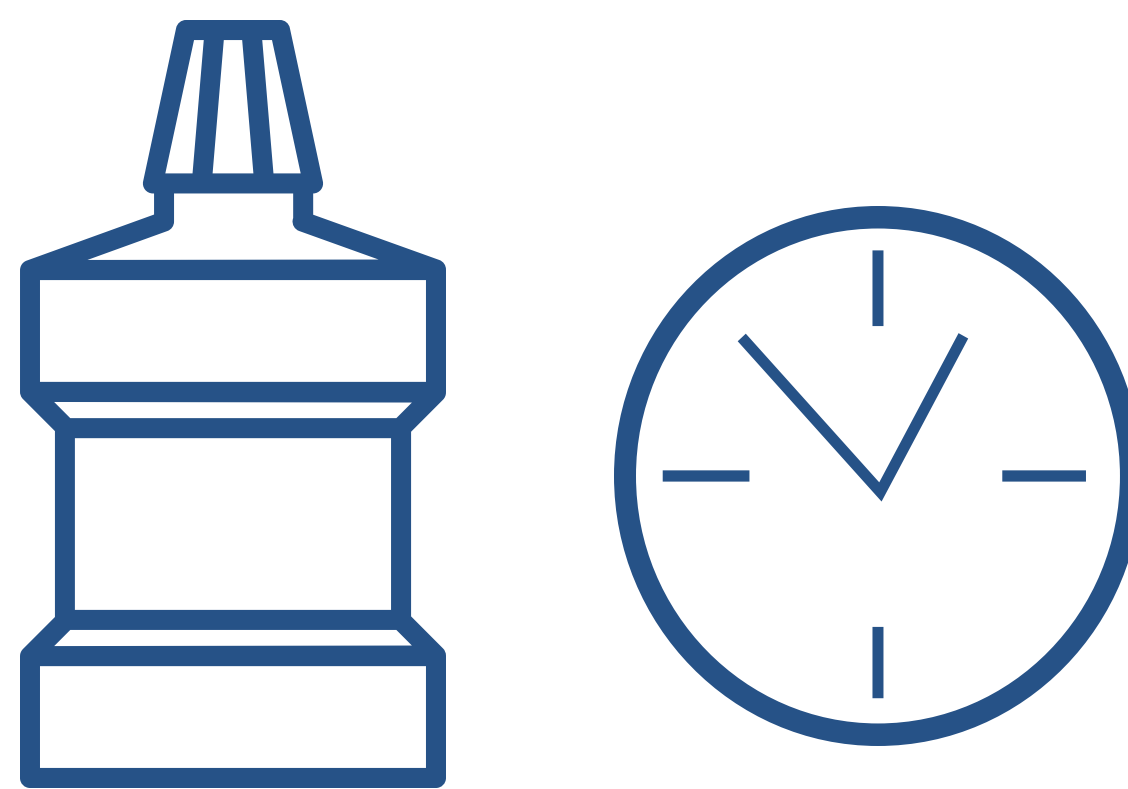


SPECIALIST PRACTICE TREATMENT DURING THE COVID-19 CRISIS: THE SURGERY



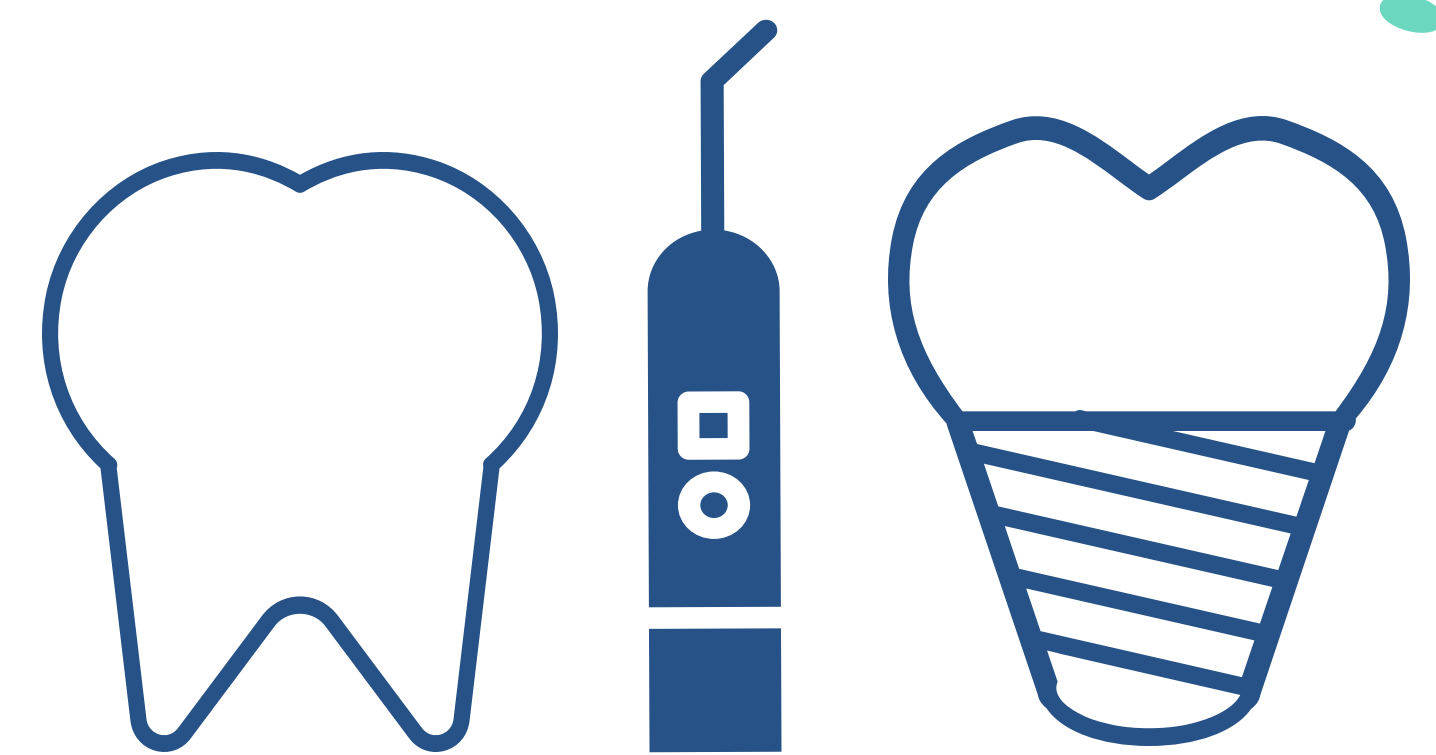
PPE

Appropriate personal protective equipment will be worn in the surgery by our clinicians.



H2O2

A pre-operative hydrogen peroxide mouth rinse for 1 minute will be given to patients prior to commencing the dental procedure.



OptraGate

Where possible intra-oral barriers will be used such as OptraGate.



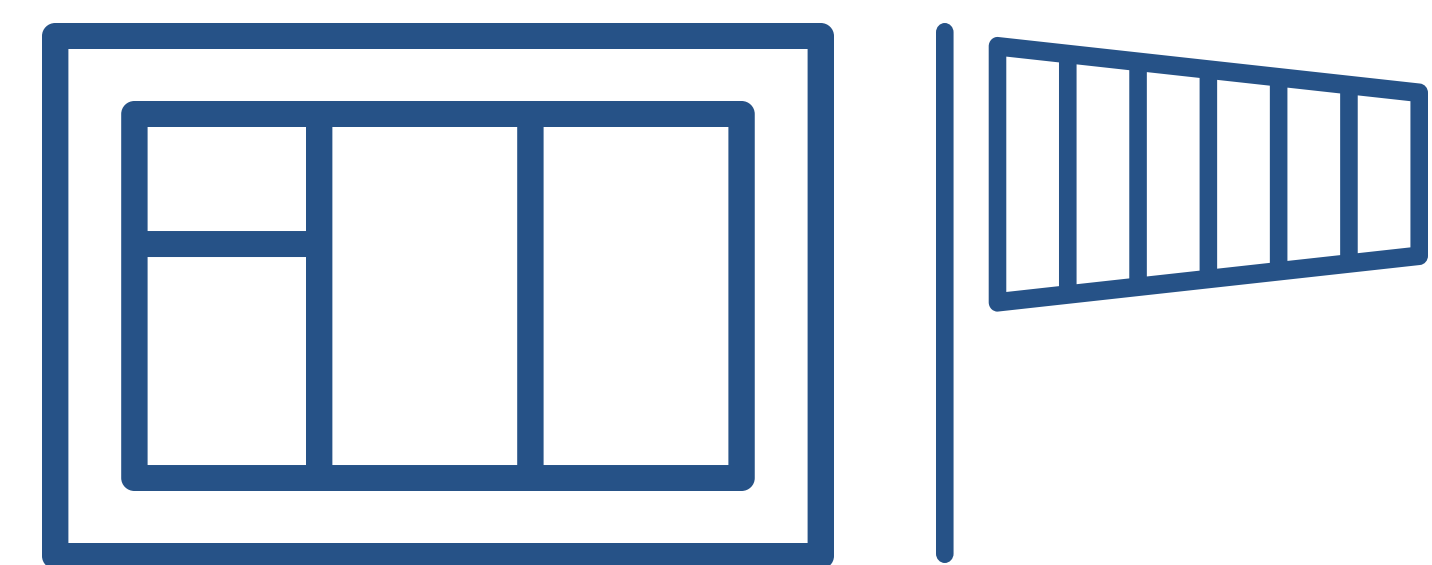
High Power Suction

We will limit aerosols within the surgery with high power/ dual suction at all times.



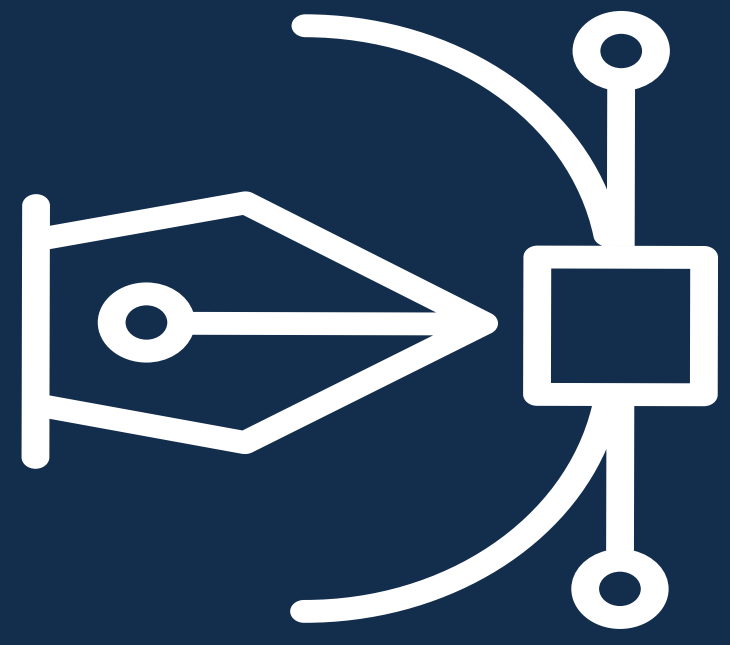
Disinfection

Once the procedures are completed and the patient has left, the surgery will be disinfected based on current guidelines.



Ventilation

Our team will ensure the surgeries are well ventilated combined with an advanced air purification system.



References



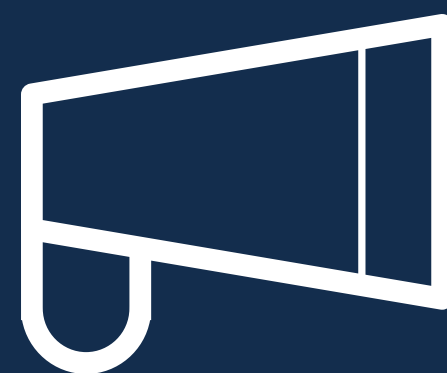
<https://www.dental-update.co.uk/issueArticle.asp?ec=av+1&aKey=2104>

<https://journals.sagepub.com/doi/10.1177/0022034520920580>

<https://oralhealth.cochrane.org/news/recommendations-re-opening-dental-services-rapid-review-international-sources>

<http://www.efp.org/publications/covid-19.html>

<https://www.dental-update.co.uk/issueArticle.asp?ec=av+1&aKey=2104>



01603 6325252



info@ndspecialists.uk



Norfolk Dental Specialists
1 Victoria Street, Norwich
Norfolk, NR1-3QX